

NEW **US-VALVES**

26.5 MPa Stainless Steel Needle Stop Valve



NEW

US-VALVES

Features

- ① Designed to enhance safety, and manufactured under rigorous quality control standards.
- ② Robust forged body and compact bonnet-less construction.
- ③ Needle design enhances ease of flow adjustment.
- ④ Packing and gland design reduce handle torque and enhance seal performance.
- ⑤ Easy-to-operate handwheel with large drainage holes. Handle accommodates washer-shaped identification plates.
- ⑥ There are Lock Nut and Travel Indicator as option parts.
- ⑦ Body designed so that it may be secured with U-bolts.

Specifications

Body Material	Max. Operating Pressure (MPa)	Fluid Temperature Range (°C)
SUSF316	26.5	- 45 ~ + 230

Cautions:

- 1: Applicable fluid: Water, Air, Nitrogen gas, Inert gas like Helium, and non-corrosive gas and liquid.
- 2: Notify Fujikin in advance if you are planning to use this product with toxic gases or at vacuum conditions

Applications

High-pressure gas lines in areas such as industrial machinery, steel mills, petroleum refineries, chemical plants, power plants, and shipyards.

Refer to P2-12 for details, such as form and specifications.

Panel Mounting Procedures

If you are panel-mounting the valve, follow these instructions:

- ① Ensure that the bracket hole on the panel is ≤ 0.5 mm wider than the valve's panel-mounting diameter (refer to the CAD drawing).
- ② Use an adjustable wrench to loosen the Hex Nut securing the Handle. Remove the Handle.
- ③ Remove the Gland Nut and the Panel Nut.
- ④ Mount the valve on the panel and secure it with the Panel Nut. Reattach the Gland Nut and the Handle.
- ⑤ Tighten the Gland Nut with an adjustable wrench to the torque shown in the table below.

Tightening Torque of Gland Nut (Reference Value)

Nominal Diameter		Torque (N · m)
in.	mm	
1/8, 1/4	6, 8	15
3/8, 1/2	10, 15	20
3/4	20	30
1	25	40

Cautions:

- 1: Nominal diameter 6.35 - 12.7 mm (1/4 - 1/2 in.) socket weld valves require the same torque as 1/8 and 1/4 in.
- 2: Valves with nominal torque of nominal diameter 1/8, 1/4 in. and 9.52 mm POWERFULLOK end connections require the same torque as 1/8, 1/4 in. Nominal diameter 9.52, 10, 12 and 12.7 mm end connections require the same torque as nominal diameter 3/8 and 1/2 in.

Ordering Number Designation

Please use the ordering number designations below when placing an order or making an inquiry.

- For more information on flanged valves, see P.13 or subsequent ones.
- For more information on larger valves (1 1/4" - 2"), see P.18 or subsequent ones.

US-127PA

U : Stainless Steel

S : Needle Stop Valves

1 : Threaded connector, globe pattern

3 : Threaded connector, angle pattern

5 : Socket weld connector, globe pattern

6 : Socket weld connector, angle pattern

9 : POWERFULLOK connector, globe pattern

0 : POWERFULLOK connector, angle pattern

P: with Panel Nut
L: with Lock Nut
G: with Travel Indicator

27: 26.5 MPa

※ 1
Nominal Diameter

A: 1/8 B

B: 1/4 B

C: 3/8 B

D: 1/2 B

E: 3/4 B

F: 1 B

※ 1: Thread Size




Taper pipe thread	Designation		A	B	C	D	E	F
	JIS B 0203 (1982) (ISO7/1)	Male thread	R 1/8	R 1/4	R 3/8	R 1/2	R 3/4	R 1
	Female thread	Rc1/8	Rc1/4	Rc3/8	Rc1/2	Rc3/4	Rc1	

Thread designation complies with JIS B0203 (1982)(ISO7/1).
Sizes as per JIS B0203 (1981) are shown for reference purpose.

Note: Fujikin US-VALVES can serve as both flow control valves and stop valves. They are available in a variety of end connections, including threaded, welded, flanged, and double ferrule compression fittings. Models with lock nuts and travel indicators are also available.




US-VALVES Globe Pattern

Product overview and reference pages

Types	Configuration	Nominal Dia.	Orifice Dia. (φ mm)	Max. Cv value	Mass (approx.) (kg)	Ordering Numbers	Page
Threaded Needle Stop Valves with Panel Nut ● US-127P	 ● Globe Pattern	Rc 1/8	5	0.34	0.3	US-127PA-R	5
		Rc 1/4	5	0.46	0.3	US-127PB-R	
		Rc 3/8	6	0.66	0.4	US-127PC-R	
		Rc 1/2	8	1.08	0.6	US-127PD-R	
		Rc 3/4	10	1.83	0.9	US-127PE-R	
		Rc 1	12	2.64	1.6	US-127PF-R	
Socket Weld Needle Stop Valves with Panel Nut ● US-527P	 ● Globe Pattern	1/8	5	0.34	0.3	US-527PA-R	5
		1/4	5	0.46	0.3	US-527PB-R	
		3/8	6	0.66	0.5	US-527PC-R	
		1/2	8	1.08	0.7	US-527PD-R	
		3/4	10	1.83	1	US-527PE-R	
		1	12	2.64	1.8	US-527PF-R	
		10	5	0.46	0.5	US-527P-10-R	
		12	5	0.46	0.5	US-527P-12-R	
		6.35	5	0.34	0.5	US-527P-6.35-R	
		9.52	5	0.46	0.5	US-527P-9.52-R	
12.7	5	0.46	0.5	US-527P-12.7-R			
POWERFULLOK Connector Needle Stop Valve with Panel Nut ● US-927P	 ● Globe Pattern	6	5	0.34	0.3	US-927P-P6-R	6
		8	5	0.46	0.3	US-927P-P8-R	
		10	6	0.59	0.5	US-927P-P10-R	
		12	6	0.59	0.5	US-927P-P12-R	
		6.35	5	0.34	0.3	US-927P-P6.35-R	
		9.52	6	0.59	0.5	US-927P-P9.52-R	
		12.7	6	0.66	0.5	US-927P-P12.7-R	

US-VALVES Angle Pattern

Product overview and reference pages



Types	Configuration	Nominal Dia.	Orifice Dia. (φ mm)	Max. Cv value	Mass (approx.) (kg)	Ordering Numbers	Page
Threaded Needle Stop Valve with Panel Nut ● US-327P	 ● Angle Pattern	Rc 1/8	5	0.48	0.4	US-327PA-R	7
		Rc 1/4	5	0.61	0.4	US-327PB-R	
		Rc 3/8	6	0.88	0.6	US-327PC-R	
		Rc 1/2	8	1.53	0.6	US-327PD-R	
		Rc 3/4	10	2.47	1	US-327PE-R	
		Rc 1	12	3.5	1.7	US-327PF-R	
Socket Weld Needle Stop Valve with Panel Nut ● US-627P	 ● Angle Pattern	1/8	5	0.48	0.3	US-627PA-R	7
		1/4	5	0.61	0.3	US-627PB-R	
		3/8	6	0.88	0.5	US-627PC-R	
		1/2	8	1.53	0.7	US-627PD-R	
		3/4	10	2.47	1	US-627PE-R	
		1	12	3.5	1.8	US-627PF-R	
POWERFULLOK Connector Needle Stop Valve with Panel Nut ● US-027P	 ● Angle Pattern	6	5	0.48	0.3	US-027P-P6-R	8
		8	5	0.61	0.3	US-027P-P8-R	
		10	6	0.77	0.5	US-027P-P10-R	
		12	6	0.77	0.5	US-027P-P12-R	
		6.35	5	0.48	0.3	US-027P-P6.35-R	
		9.52	6	0.77	0.5	US-027P-P9.52-R	
		12.7	6	0.77	0.5	US-027P-P12.7-R	

Note: Materials and dimensions are subject to change without notice.



US-VALVES with Lock Nut / Travel Indicator

It's possible to purchase a Lock Nut and Travel Indicator only, and the attachment after product purchase. For details, please refer to P.9-10. (By specification, it's possible to purchase attached them as follows.)

Product overview and reference pages

Types	Configuration	Nominal Dia.	Orifice Dia. (φ mm)	Max. Cv Value	Mass (approx.) (kg)	Ordering Numbers	PAGE
Threaded Needle Stop Valves with Lock Nut ● US-127L	 ● Globe Pattern	Rc1/8	5	0.34	0.3	US-127LA-R	11
		Rc1/4	5	0.46	0.3	US-127LB-R	
		Rc3/8	6	0.66	0.4	US-127LC-R	
		Rc1/2	8	1.08	0.6	US-127LD-R	
Threaded Needle Stop Valves with Lock Nut ● US-327L	 ● Angle Pattern	Rc1/8	5	0.48	0.4	US-327LA-R	
		Rc1/4	5	0.61	0.4	US-327LB-R	
		Rc3/8	6	0.88	0.6	US-327LC-R	
		Rc1/2	8	1.53	0.7	US-327LD-R	

Product overview and reference pages

Types	Configuration	Nominal Dia.	Orifice Dia. (φ mm)	Max. Cv Value	Mass (approx.) (kg)	Ordering Numbers	PAGE
Threaded Needle Stop Valves with Travel Indicator ● US-127G	 ● Globe Pattern	Rc1/8	5	0.34	0.3	US-127GA-R	11
		Rc1/4	5	0.46	0.3	US-127GB-R	
		Rc3/8	6	0.66	0.4	US-127GC-R	
		Rc1/2	8	1.08	0.6	US-127GD-R	
Threaded Needle Stop Valves with Travel Indicator ● US-327G	 ● Angle Pattern	Rc1/8	5	0.48	0.4	US-327GA-R	12
		Rc1/4	5	0.61	0.4	US-327GB-R	
		Rc3/8	6	0.88	0.6	US-327GC-R	
		Rc1/2	8	1.53	0.6	US-327GD-R	

Cautions:

1: Refer to P. 5-12 for more detailed specifications and other information.

2: Applicable fluid: Water, Air, Nitrogen gas, Inert gas like Helium, and non-corrosive gas and liquid.

3: Notify Fujikin in advance if you are planning to use this product with toxic gases or at vacuum conditions.

4: Please note the following welding precautions:

4-1. When welding the valve to pipes, use a chiller or cover the valve with a wet towel to protect it from the heat. Wait at least 20 minutes (for the valve to cool to room temperature) after finishing one side. Then, weld the other side in order to reduce the effects of the heat on the valve.

4-2. The Gland Nut may loosen during welding because of the heat. When the valve returns to room temperature after welding, retighten the Gland Nut. Always use the recommended tightening torque (see the table on P. 1).


5: The Gland Packing in these valves was adjusted prior to shipment. To prevent water from permeating the Packing, ensure that the Gland Nut is tight before performing pressure tests on this valve. Please see the Panel Mounting Procedures for more information on the tightening torque required.

Attention



Avoid potential problems by notifying Fujikin before changing the conditions of use.

Product overview and reference pages

Types	Configuration	Nominal Dia. (A)	Orifice Dia. (φ mm)	Max. Cv Value	PAGE
Jis RF Flange Needle Stop Valves JIS 10K, JIS 20K, JIS 30K JIS 40K, JIS 63K		10	8	1.08	14
		15	8	1.08	
		20	10	1.83	15
		25	12	2.64	
ANSI RF Flange Needle Stop Valves ANSI 150, ANSI 300 ANSI 600		15	8	1.08	16
		20	10	1.83	
		25	12	2.64	
ANSI RJ Flange Needle Stop Valves ANSI 900, ANSI 1500		15	8	1.08	17
		20	10	1.83	
		25	12	2.64	

Cautions:

1: Refer to P. 5-12 for more detailed specifications and other information.

2: Applicable fluid: Water, Air, Nitrogen gas, Inert gas like Helium, and non-corrosive gas and liquid.

3: Notify Fujikin in advance if you are planning to use this product with toxic gases or at vacuum conditions.

4: The Gland Packing in these valves was adjusted prior to shipment. To prevent water from permeating the Packing, ensure that the Gland Nut is tight before performing pressure tests on this valve. Please see the Panel Mounting Procedures for more information on the tightening torque required.

Attention



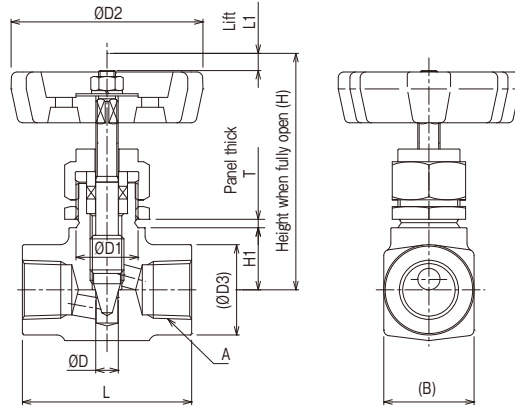
Avoid potential problems by notifying Fujikin before changing the conditions of use.

Note: Materials and dimensions are subject to change without notice.

Stainless Steel 26.5 MPa Needle Stop Valve with Panel Nut

Rc CONNECTIONS TYPE

US-127P Type



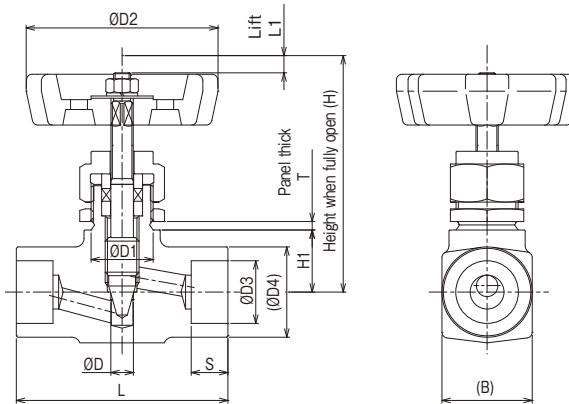
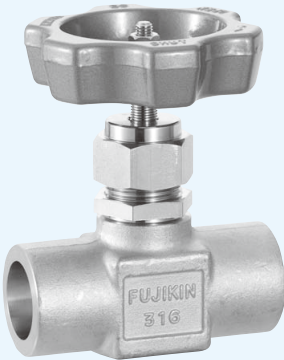
● Dimensions (in mm unless otherwise specified)

UNIT(mm)

Nominal Dia.	Orifice Dia. D	Face-to-face Dimension L	Connecting Thread A	Panel Mounting		Height when fully opened H	Lift L1	Handle Dia. D2	D3	B	Panel Thick T		Max. Cv Value	Mass (approx.) (kg)	Ordering Numbers
				D1	H1						MIN.	MAX.			
6	1/8	5	Rc1/8	18.5	16	68	5	58	22	22	1	3.5	0.34	0.3	US-127PA-R
8	1/4	5	Rc1/4	18.5	16	68	5	58	22	22	1	3.5	0.46	0.3	US-127PB-R
10	3/8	6	Rc3/8	22.5	19	81	6	68	26	26	1	3.5	0.66	0.4	US-127PC-R
15	1/2	8	Rc1/2	22.5	22	86	7.5	68	32	32	1	3.5	1.08	0.6	US-127PD-R
20	3/4	10	Rc3/4	25.5	30	107	10	78	38	38	1.5	3.5	1.83	0.9	US-127PE-R
25	1	12	Rc1	33.5	36	130	12	88	46	46	1.5	3.5	2.64	1.6	US-127PF-R

SOCKET WELD TYPE

US-527P Type



Welding Precautions:

- (1) When welding the valve to pipes, use a chiller or cover the valve with a wet towel to protect it from the heat. Wait at least 20 minutes (for the valve to cool to room temperature) after finishing one side. Then, weld the other side in order to reduce the effects of the heat on the valve.
- (2) The Gland Nut may loosen during welding because of the heat. When the valve returns to room temperature after welding, retighten the Gland Nut. Always use the recommended tightening torque (see the table on P.1).

● Dimensions (in mm unless otherwise specified)

UNIT(mm)

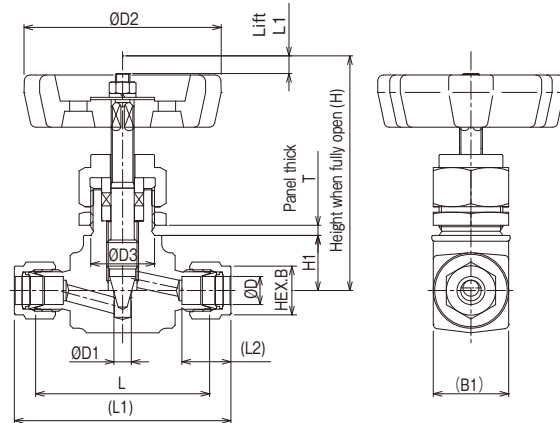
Nominal Dia.	Orifice Dia. D	Face-to-face Dimension L	Pipe Connection		Panel Mounting		Height when fully opened H	Lift L1	Handle Dia. D2	D4	B	Panel Thick T		Max. Cv Value	Mass (approx.) (kg)	Recommend Gland Nut Tightening Torque (N · m)	Ordering Numbers
			D3	S	D1	H1						MIN.	MAX.				
6A	5	60	11	10	18.5	16	68	5	58	22	22	1	3.5	0.34	0.3	15	US-527PA-R
8A	5	60	14.3	10	18.5	16	68	5	58	22	22	1	3.5	0.46	0.3	15	US-527PB-R
10A	6	65	17.8	13	22.5	19	81	6	68	26	26	1	3.5	0.66	0.5	20	US-527PC-R
15A	8	75	22.2	13	22.5	22	86	7.5	68	32	32	1	3.5	1.08	0.7	20	US-527PD-R
20A	10	85	27.7	16	25.5	30	107	10	78	38	38	1.5	3.5	1.83	1	30	US-527PE-R
25A	12	100	34.5	16	33.5	36	130	12	88	46	46	1.5	3.5	2.64	1.8	45	US-527PF-R
6	5	60	6.3	7	18.5	16	68	5	58	22	22	1	3.5	0.34	0.5	15	US-527P-6-R
8	5	60	8.3	8	18.5	16	68	5	58	22	22	1	3.5	0.34	0.5	15	US-527P-8-R
10	5	60	10.3	10	18.5	16	68	5	58	22	22	1	3.5	0.46	0.5	15	US-527P-10-R
12	5	60	12.3	10	18.5	16	68	5	58	22	22	1	3.5	0.46	0.5	15	US-527P-12-R
6.35	5	60	6.7	7	18.5	16	68	5	58	22	22	1	3.5	0.34	0.5	15	US-527P-6.35-R
9.52	5	60	10	10	18.5	16	68	5	58	22	22	1	3.5	0.46	0.5	15	US-527P-9.52-R
12.7	5	60	13	10	18.5	16	68	5	58	22	22	1	3.5	0.46	0.5	15	US-527P-12.7-R

POWERFULOK TYPE

US-927P Type



* Super W-Bite Fitting (SUW) connection type can also be manufactured.



● Dimensions (in mm unless otherwise specified)

UNIT(mm)

Nominal Dia. D	Orifice Dia. D1	Face-to-face Dimension		Connecting Thread		Panel Mounting		Height when fully opened H	Lift L1	Handle Dia. D2	B1	Panel Thick T		Max. Cv Value	Mass (approx.) (kg)	Ordering Numbers
		L	L1	L2	B	D3	H1					MIN.	MAX.			
6	5	54	68.8	15.2	14	18.5	16	68	5	58	22	1	3.5	0.34	0.3	US-927P-P6-R
8	5	54	69	16.2	16	18.5	16	68	5	58	22	1	3.5	0.46	0.3	US-927P-P8-R
10	6	60	75.2	17.2	19	22.5	19	81	6	68	26	1	3.5	0.59	0.5	US-927P-P10-R
12	6	60	80.2	22.8	22	22.5	19	81	6	68	26	1	3.5	0.59	0.5	US-927P-P12-R
6.35	5	54	68.8	15.2	14	18.5	16	68	5	58	22	1	3.5	0.34	0.3	US-927P-P6.35-R
9.52	6	60	74.8	16.8	17	22.5	19	81	6	68	26	1	3.5	0.59	0.5	US-927P-P9.52-R
12.7	6	62	82.2	22.8	22	22.5	19	81	6	68	26	1	3.5	0.66	0.5	US-927P-P12.7-R

● Materials

Parts	Materials
Body *	SUSF316
Stem *	SUS316 Stellited (Nominal Dia. 3/4 and 1)
Gland Packing *	C-PTFE + PTFE
Handle	ADC12

Standard color of the Handwheel is metallic blue.
*: Wetted parts

● Specifications

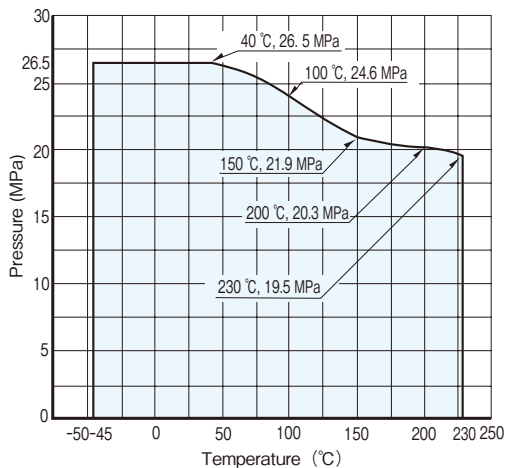
Max. Operating Pressure (MPa)	Fluid Temperature Range (°C)
26.5 *1	-45 ~ +230

*1: See the Temperature-Pressure Curve.

Exceptions:

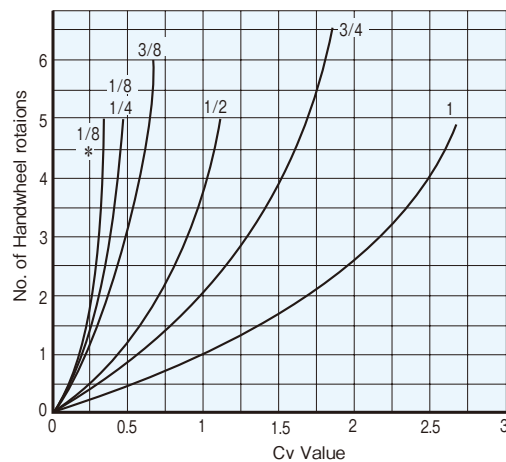
- 1: Applicable fluid: Water, Air, Nitrogen gas, Inert gas like Helium, and non-corrosive gas and liquid.
- 2: Notify Fujikin in advance if you are planning to use this product with toxic gases or at vacuum conditions.

● Temperature - Pressure Curve

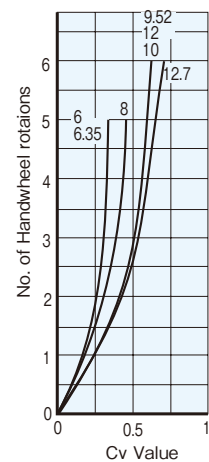


● Cv Curves (US-127P / US-527P)

*: Nominal Dia. 1/8B
(Threaded connector, globe pattern type, ordering Number: US-127PA)



(US-927P)

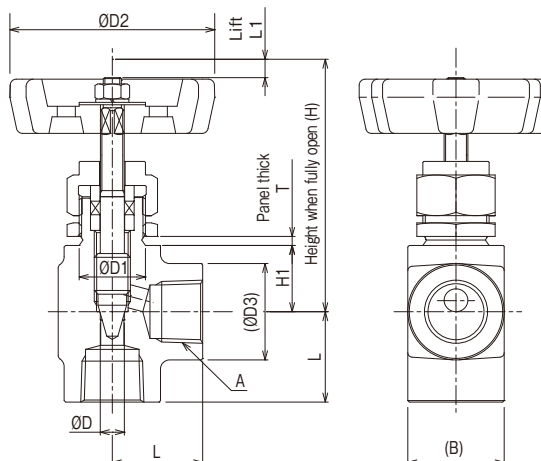
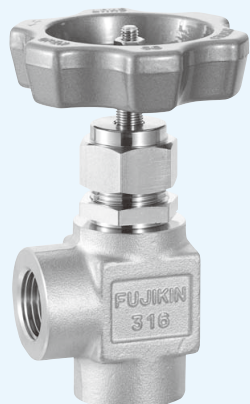


Note: Materials and dimensions are subject to change without notice.

Stainless Steel 26.5 MPa Needle Stop Valve with Panel Nut

Rc CONNECTIONS TYPE

US-327P Type

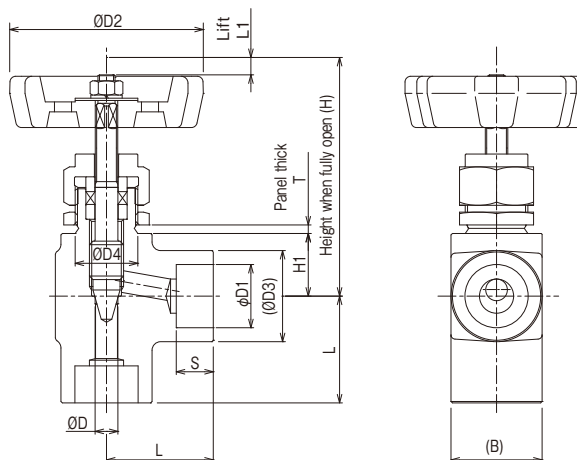


● Dimensions (in mm unless otherwise specified)

Nominal Dia.		Orifice Dia. D	Face-to-face Dimension L	Connecting Thread A	Panel Mounting		Height when fully opened H	Lift L1	Handle Dia.			Panel Thick T		Max. Cv Value	Mass (approx.) (kg)	Ordering Numbers
A	B				D1	H1			D2	D3	B	MIN.	MAX.			
6	1/8	5	24	Rc1/8	18.5	16	68	5	58	22	22	1	3.5	0.48	0.4	US-327PA-R
8	1/4	5	24	Rc1/4	18.5	16	68	5	58	22	22	1	3.5	0.61	0.4	US-327PB-R
10	3/8	6	27.5	Rc3/8	22.5	19	81	6	68	32	32	1	3.5	0.88	0.6	US-327PC-R
15	1/2	8	30	Rc1/2	22.5	22	86	7.5	68	32	32	1	3.5	1.53	0.6	US-327PD-R
20	3/4	10	35	Rc3/4	25.5	30	107	10	78	38	38	1.5	3.5	2.47	1	US-327PE-R
25	1	12	42.5	Rc1	33.5	36	130	12	88	46	46	1.5	3.5	3.5	1.7	US-327PF-R

SOCKET WELD TYPE

US-627P Type



Welding Precautions:

- (1) When welding the valve to pipes, use a chiller or cover the valve with a wet towel to protect it from the heat. Wait at least 20 minutes (for the valve to cool to room temperature) after finishing one side. Then, weld the other side in order to reduce the effects of the heat on the valve.
- (2) The Gland Nut may loosen during welding because of the heat. When the valve returns to room temperature after welding, retighten the Gland Nut. Always use the recommended tightening torque (see the table on P.1).

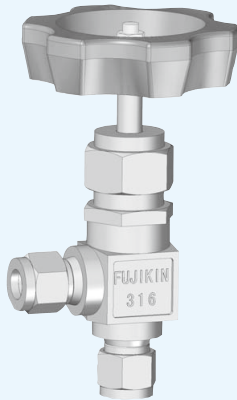
● Dimensions (in mm unless otherwise specified)

UNIT(mm)

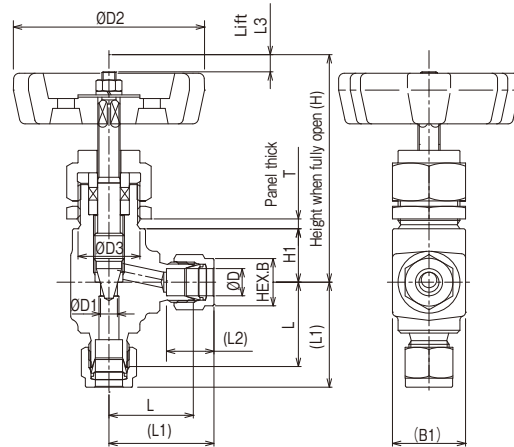
Nominal Dia.		Orifice Dia. D	Face-to-face Dimension L	Pipe Connection		Panel Mounting		Height when fully opened H	Lift L1	Handle Dia.			Panel Thick T		Max. Cv Value	Mass (approx.) (kg)	Recommend Gland Nut Tightening Torque (N · m)	Ordering Numbers
A	B			D1	S	D4	H1			D2	D3	B	MIN.	MAX.				
6	1/8	5	30	11	10	18.5	16	68	5	58	22	22	1	3.5	0.48	0.3	15	US-627PA-R
8	1/4	5	30	14.3	10	18.5	16	68	5	58	22	22	1	3.5	0.61	0.3	15	US-627PB-R
10	3/8	6	32.5	17.8	13	22.5	19	81	6	68	32	32	1	3.5	0.88	0.5	20	US-627PC-R
15	1/2	8	37.5	22.2	13	22.5	22	86	7.5	68	32	32	1	3.5	1.53	0.7	20	US-627PD-R
20	3/4	10	42.5	27.7	16	25.5	30	107	10	78	38	38	1.5	3.5	2.47	1	30	US-627PE-R
25	1	12	50	34.5	16	33.5	36	130	12	88	46	46	1.5	3.5	3.5	1.8	40	US-627PF-R

POWERFULOK TYPE

US-027P Type



* Super W-Bite Fitting (SUW) connection type can also be manufactured.



● Dimensions (in mm unless otherwise specified)

UNIT(mm)

Nominal Dia. D	Orifice Dia. D1	Face-to-face Dimension		Pipe Connection		Connecting Thread		Height when fully opened H	Lift L1	Handle Dia. D2	B1	Panel Thick T		Max. Cv Value	Mass (approx.) (kg)	Ordering Numbers
		L	L1	L2	B	D3	H1					MIN.	MAX.			
6	5	27	34.4	15.2	14	18.5	16	68	5	58	22	1	3.5	0.48	0.3	US-027P-P6-R
8	5	27	34.5	16.2	16	18.5	16	68	5	58	22	1	3.5	0.61	0.3	US-027P-P8-R
10	6	30	37.6	17.2	19	22.5	19	81	6	68	26	1	3.5	0.77	0.5	US-027P-P10-R
12	6	30	40.1	22.8	22	22.5	19	81	6	68	26	1	3.5	0.77	0.5	US-027P-P12-R
6.35	5	27	34.4	15.2	14	18.5	16	68	5	58	26	1	3.5	0.48	0.3	US-027P-P6.35-R
9.52	6	30	37.4	16.8	17	22.5	19	81	6	68	26	1	3.5	0.77	0.5	US-027P-P9.52-R
12.7	6	31	41.1	22.8	22	22.5	19	81	6	68	32	1	3.5	0.77	0.5	US-027P-P12.7-R

● Materials

Parts	Materials
Body *	SUSF316
Stem *	SUS316 Stellited (Nominal Dia. 3/4 and 1)
Gland Packing *	C-PTFE + PTFE
Handle	ADC12

Standard color of the handwheel is metallic blue.
*: Wetted parts

● Specifications

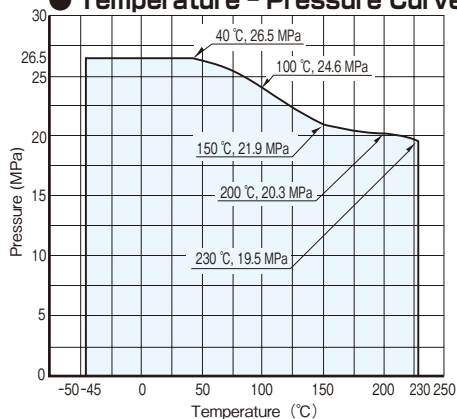
Max. Operating Pressure (MPa)	Fluid Temperature Range (°C)
26.5 *1	-45 ~ +230

*1: See the Temperature-Pressure Curve.

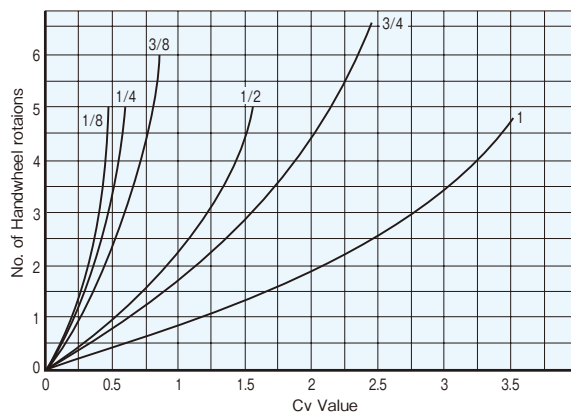
Exceptions:

- 1: Applicable fluid: Water, Air, Nitrogen gas, Inert gas like Helium, and non-corrosive gas and liquid.
- 2: Notify Fujikin in advance if you are planning to use this product with toxic gases or at vacuum conditions.

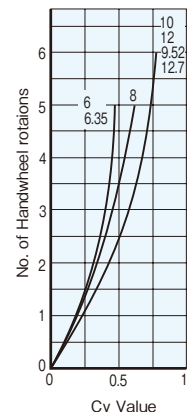
● Temperature - Pressure Curve



● Cv Curves (US-327P, US-627P)



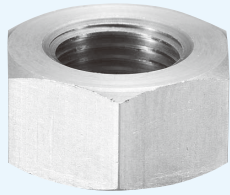
(US-027P)



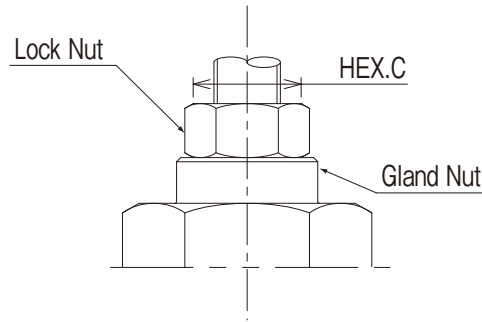
Note: Materials and dimensions are subject to change without notice.

Option Parts

Lock Nut



Lock Nut and Indicator Set are able to purchase each, and attach to.
(By specification, we can manufacture also in the state attached.)



● Size & Ordering Numbers

UNIT(mm)

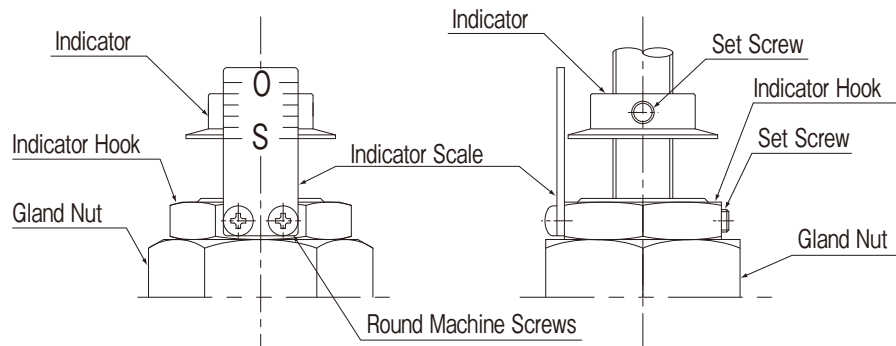
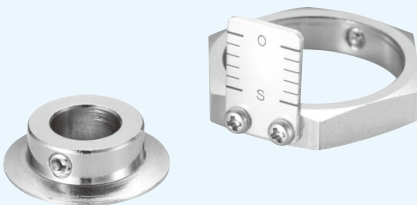
Valves to attach		Nominal Dia.		C	Ordering Numbers
A	B	Tube O. D.			
		mm	inch		
6	1/8	6	6.35	11	L-US-127A
8	1/4	8	—	13	L-US-127C
10	3/8	10	9.52	17	L-US-127E
15	1/2	12	12.7	19	L-US-127F
20	3/4	—	—		
25	1	—	—		

Please select the ordering number of Option Parts from the Nominal Dia. (Tube O. D.) of the valve to attach.

Attachment Method

1. Lock Nut Attach to the screw part of stem after removing the Handle.
2. Refer to P.10 for Lock Nut attachment.

Indicator Set



● Size & Ordering Numbers

UNIT(mm)

Valves to attach		Nominal Dia.		Ordering Numbers *
A	B	Tube O. D.		
		mm	inch	
6	1/8	6	6.35	G-US-127A-R
8	1/4	8	—	G-US-127C-R
10	3/8	10	9.52	G-US-127D-R
15	1/2	12	12.7	G-US-127E-R
20	3/4	—	—	G-US-127F-R
25	1	—	—	

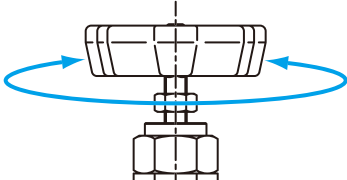
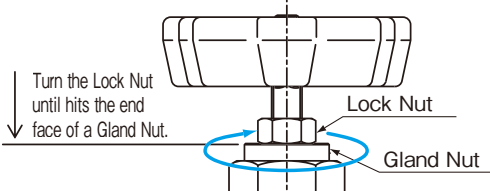
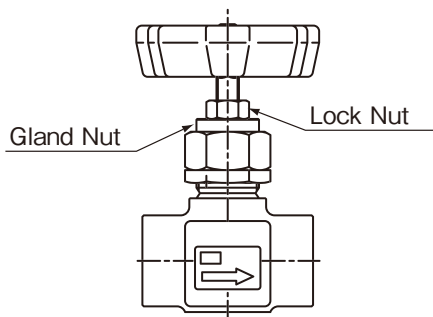
Attachment Methods

1. Indicator Attach to the screw part of Stem and Gland Nut after removing the Handle.
2. Refer to P.10 for adjustment.

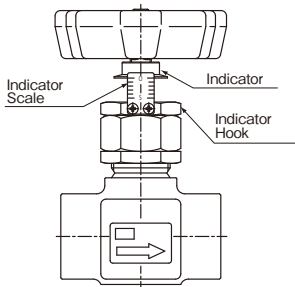
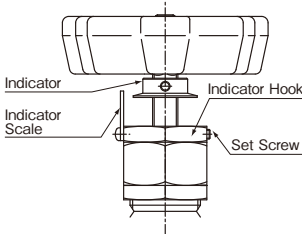
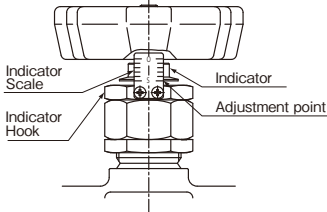
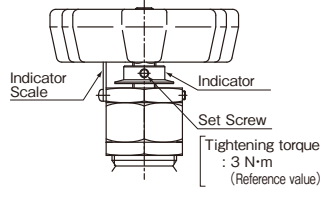
*: Indicator (with Set Screw) & Indicator Hook (with Indicator Scale and Round Machine Screws) set and procedure.

Note: Use which combines Lock Nut and Indicator cannot be performed.

Lock Nut Attachment Method & Procedure

1		Adjust the required valve travel.																				
2	 <p style="font-size: small;">Turn the Lock Nut until hits the end face of a Gland Nut.</p>	Turn the Lock Nut clockwise and hit the end face of the Gland Nut.																				
3		<p>3-1. Lock the Stem by tightening the Lock Nut.</p> <p>3-2. Recommended Lock Nut Tightening Torque</p> <p style="text-align: center; font-size: x-small;">Table 1: Recommended Lock Nut Tightening Torque</p> <table border="1" style="margin: auto; border-collapse: collapse; text-align: center;"> <thead> <tr> <th colspan="2" style="font-size: x-small;">Nominal Dia.</th> <th rowspan="2" style="font-size: x-small;">Recommended Tightening Torque (N · m)</th> </tr> <tr> <th style="font-size: x-small;">A</th> <th style="font-size: x-small;">B</th> </tr> </thead> <tbody> <tr> <td style="font-size: x-small;">6</td> <td style="font-size: x-small;">1/8</td> <td rowspan="2" style="font-size: x-small;">5</td> </tr> <tr> <td style="font-size: x-small;">8</td> <td style="font-size: x-small;">1/4</td> </tr> <tr> <td style="font-size: x-small;">10</td> <td style="font-size: x-small;">3/8</td> <td rowspan="2" style="font-size: x-small;">10</td> </tr> <tr> <td style="font-size: x-small;">15</td> <td style="font-size: x-small;">1/2</td> </tr> <tr> <td style="font-size: x-small;">20</td> <td style="font-size: x-small;">3/4</td> <td rowspan="2" style="font-size: x-small;">15</td> </tr> <tr> <td style="font-size: x-small;">25</td> <td style="font-size: x-small;">1</td> </tr> </tbody> </table>	Nominal Dia.		Recommended Tightening Torque (N · m)	A	B	6	1/8	5	8	1/4	10	3/8	10	15	1/2	20	3/4	15	25	1
Nominal Dia.		Recommended Tightening Torque (N · m)																				
A	B																					
6	1/8	5																				
8	1/4																					
10	3/8	10																				
15	1/2																					
20	3/4	15																				
25	1																					

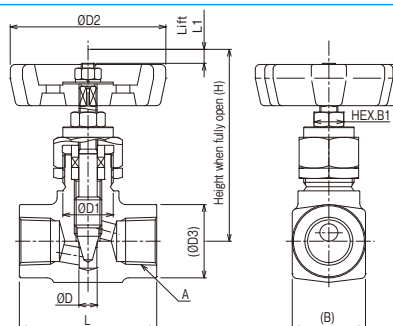
Indicator Set Attachment Method & Procedure

	Elevational View	Side View (Indicator side)	
1			<p>1-1. Loosen the Set Screw of Indicator Hook (HEX. 2.5 mm Wrench).</p> <p>1-2. Turn the Indicator Scale to the front of a valve.</p> <p>1-3. Fix the Indicator Hook with Indicator Scale by tightening a Set Screw.</p>
2			<p>2-1. After close the valve, loosen the Set Screw of Indicator (HEX. 2.5 mm Wrench).</p> <p>2-2. Set the spittle of the Indicator to the Indicator Scale position "S".</p> <p>2-3. Tighten the Set Screw of Indicator.</p>

Stainless Steel 26.5 MPa Needle Stop Valve with Lock Nut

Rc CONNECTIONS TYPE

US-127L Type



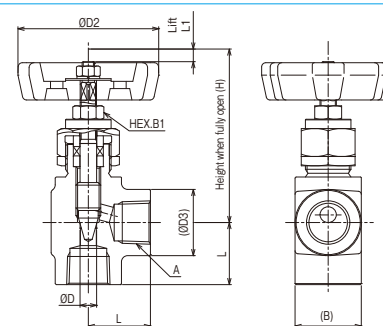
● Dimensions (in mm unless otherwise specified)

UNIT(mm)

Nominal Dia.		Orifice Dia. D	Face-to-face Dimension L	Connecting Thread A	Height when fully opened H	Lift L1	Handle Dia. D2	D3	B	B1	Max. Cv Value	Mass (approx.) (kg)	Ordering Numbers
A	B												
6	1/8	5	48	Rc1/8	68	5	58	22	22	10	0.34	0.3	US-127LA-R
8	1/4	5	48	Rc1/4	68	5	58	22	22	10	0.46	0.3	US-127LB-R
10	3/8	6	55	Rc3/8	81	6	68	26	26	13	0.66	0.4	US-127LC-R
15	1/2	8	60	Rc1/2	86	7.5	68	32	32	13	1.08	0.6	US-127LD-R

Rc CONNECTIONS TYPE

US-327L Type



● Dimensions (in mm unless otherwise specified)

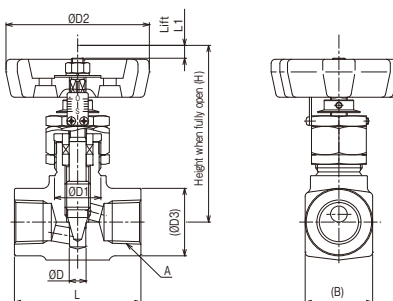
UNIT(mm)

Nominal Dia.		Orifice Dia. D	Face-to-face Dimension L	Connecting Thread A	Height when fully opened H	Lift L1	Handle Dia. D2	D3	B	B1	Max. Cv Value	Mass (approx.) (kg)	Ordering Numbers
A	B												
6	1/8	5	24	Rc1/8	68	5	58	22	22	10	0.48	0.4	US-327LA-R
8	1/4	5	24	Rc1/4	68	5	58	22	22	10	0.61	0.4	US-327LB-R
10	3/8	6	27.5	Rc3/8	81	6	68	26	26	13	0.88	0.6	US-327LC-R
15	1/2	8	30	Rc1/2	86	7.5	68	32	32	13	1.53	0.6	US-327LD-R

Stainless Steel 26.5 MPa Needle Stop Valve with Travel Indicator

Rc CONNECTIONS TYPE

US-127G Type



● Dimensions (in mm unless otherwise specified)

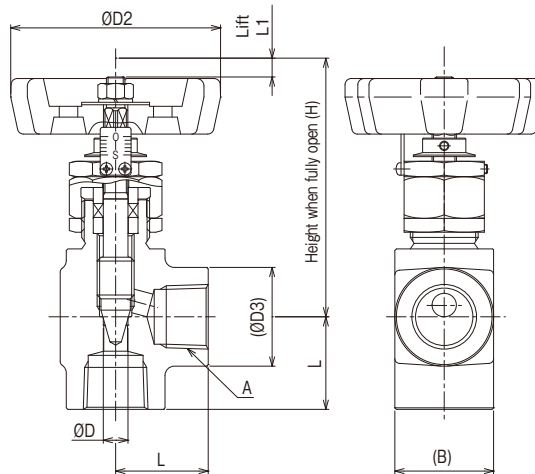
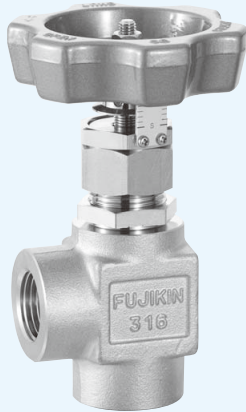
UNIT(mm)

Nominal Dia.		Orifice Dia. D	Face-to-face Dimension L	Connecting Thread A	Height when fully opened H	Lift L1	Handle Dia. D2	D3	B	Max. Cv Value	Mass (approx.) (kg)	Ordering Numbers
A	B											
6	1/8	5	48	Rc1/8	68	5	58	22	22	0.34	0.3	US-127GA-R
8	1/4	5	48	Rc1/4	68	5	58	22	22	0.46	0.3	US-127GB-R
10	3/8	6	55	Rc3/8	81	6	68	26	26	0.66	0.4	US-127GC-R
15	1/2	8	60	Rc1/2	86	7.5	68	32	32	1.08	0.6	US-127GD-R

Stainless Steel 26.5 MPa Needle Stop Valve with Travel Indicator

Rc CONNECTIONS TYPE

US-327G Type



● Dimensions (in mm unless otherwise specified)

UNIT(mm)

Nominal Dia.		Orifice Dia. D	Face-to-face Dimension L	Connecting Thread A	Height when fully opened H	Lift L1	Handle Dia. D2	D3	B	Max. Cv Value	Mass (approx.) (kg)	Ordering Numbers
A	B											
6	1/8	5	24	Rc1/8	68	5	58	22	22	0.48	0.4	US-327GA-R
8	1/4	5	24	Rc1/4	68	5	58	22	22	0.61	0.4	US-327GB-R
10	3/8	6	27.5	Rc3/8	81	6	68	26	26	0.88	0.6	US-327GC-R
15	1/2	8	30	Rc1/2	86	7.5	68	32	32	1.53	0.6	US-327GD-R

● Materials

Parts	Materials
Body *	SUSF316
Stem *	SUS316
Gland Packing *	C-PTFE + PTFE
Handle	ADC12

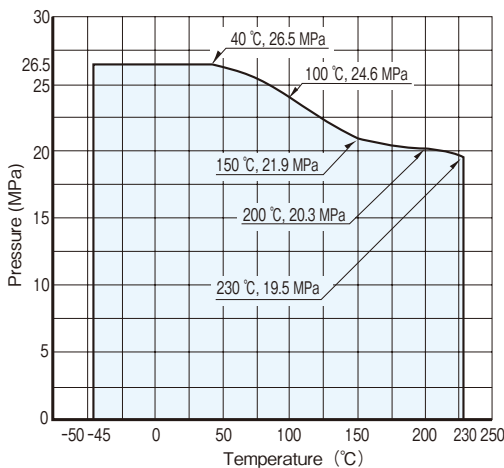
Standard color of the handwheel is metallic blue.
*: Wetted parts

● Specifications

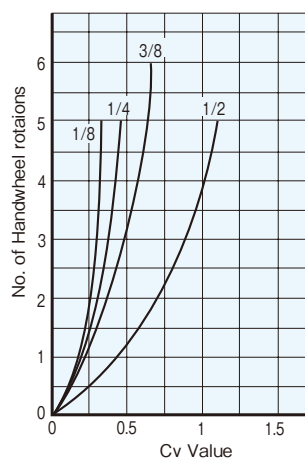
Max. Operating Pressure (MPa)	Fluid Temperature Range (°C)
26.5 *1	-45 ~+230

- * 1: See the Temperature-Pressure Curve.
Exceptions:
1: Applicable fluid: Water, Air, Nitrogen gas, Inert gas like Helium, and non-corrosive gas and liquid.
2: Notify Fujikin in advance if you are planning to use this product with toxic gases or at vacuum conditions.

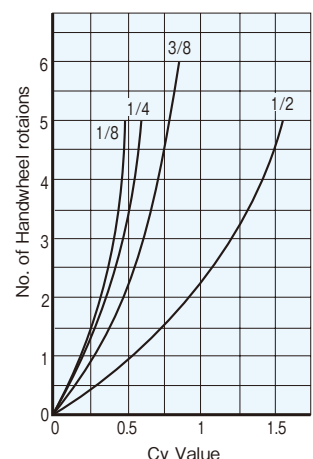
● Temperature - Pressure Curve



● Cv Curves (US-127L / US-127G)



● Cv Curves (US-327L / US-327G)



Note: Materials and dimensions are subject to change without notice.

Flanged US-VALVES

Features

- ① Designed to enhance safety, and manufactured under rigorous quality control standards.
- ② Robust forged body and compact bonnet-less construction.
- ③ Needle design enhances ease of flow adjustment.
- ④ Packing and gland design reduce handle torque and enhance seal performance.
- ⑤ Easy-to-operate handwheel with large drainage holes. Handle accommodates washer-shaped identification plates.
- ⑥ If you require valves with travel indicators or lock nuts, please ask us about our other valve lines.

Applications

High-pressure gas lines or liquid lines in areas such as industrial machinery, steel mills, petroleum refineries, chemical plants, power plants, and shipyards. Refer to P14-17 for details, such as form and specifications.

Specifications

Fluid Temperature Range

Body Material	Fluid Temperature Range (°C)
SUSF316	- 45 ~+ 230

呼び圧力に対する最高使用圧力

Pressure Class	Max. Operating Pressure (MPa)
JIS 10K	1.4 *1
JIS 20K	3.4 *1
JIS 30K	5.1 *1
JIS 40K	6.8 *1
JIS 63K	10.7 *1

Pressure Class	Max. Operating Pressure (MPa)
ANSI 150	1.89 *1
ANSI 300	4.96 *1
ANSI 600	9.92 *1
ANSI 900	14.8 *1
ANSI 1500	24.8 *1

*1: See the Temperature-Pressure Curves on the following pages.

Applicable fluid

1. Water, Air, Nitrogen gas, Inert gas like Helium, and non-corrosive gas and liquid.
2. Notify Fujikin in advance if you are planning to use this product with toxic gases or at vacuum conditions.

Ordering Number Designation

Please use the ordering Numbers designations below when placing an order or making an inquiry.

US-227D-J10R-D

U: Stainless Steel

S: Needle Stop Valve

227: Flanged, globe pattern

Nominal Diameter

D: 15A
E: 20A
F: 25A

Flange Diameter:

C: 10A
D: 15A
E: 20A
F: 25A

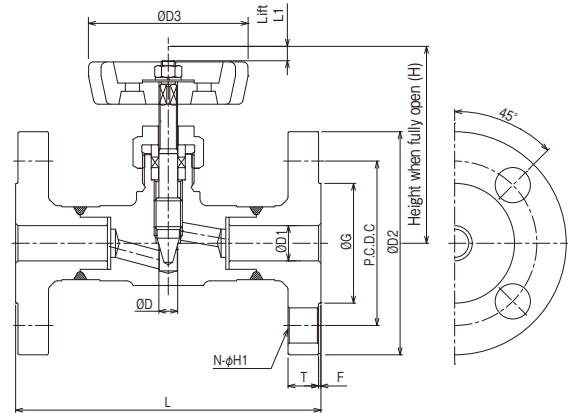
Flange Type
R: Raised face
J: Ring joint

Pressure class (see table below):

J10: JIS 10K A2: ANSI 150
J20: JIS 20K A3: ANSI 300
J30: JIS 30K A6: ANSI 600
J40: JIS 40K A9: ANSI 900
J63: JIS 63K A15: ANSI 1500

Stainless Steel JIS RF Flanged Needle Stop Valve

Raised Face Type



JIS 10K Dimension Table

UNIT(mm)

Nominal Dia.	Bore D1	Face-to-face Dimension L	Flange							Orifice Dia. D	Height when fully opened H	Lift L1	Handle Dia. D3	Max. Cv Value	Mass (approx.) (kg)	Ordering Numbers	
			D2	T	C	G	H1	N	F								
10	3/8	10	126	90	12	65	46	15	4	1	8	86	7.5	68	1.08	1.9	US-227D-J10R-C
15	1/2	15	126	95	12	75	51	15	4	1	8	86	7.5	68	1.08	1.9	US-227D-J10R-D
20	3/4	20	141	100	14	75	56	15	4	1	10	107	10	78	1.83	2.7	US-227E-J10R-E
25	1	25	156	125	14	90	67	19	4	1	12	130	12	88	2.64	4.4	US-227F-J10R-F

JIS 20K Dimension Table

UNIT(mm)

Nominal Dia.	Bore D1	Face-to-face Dimension L	Flange							Orifice Dia. D	Height when fully opened H	Lift L1	Handle Dia. D3	Max. Cv Value	Mass (approx.) (kg)	Ordering Numbers	
			D2	T	C	G	H1	N	F								
10	3/8	10	130	90	12	65	46	15	4	1	8	86	7.5	68	1.08	2	US-227D-J20R-C
15	1/2	15	130	95	12	75	51	15	4	1	8	86	7.5	68	1.08	2.1	US-227D-J20R-D
20	3/4	20	145	100	14	75	56	15	4	1	10	107	10	78	1.83	2.9	US-227E-J20R-E
25	1	25	160	125	14	90	67	19	4	1	12	130	12	88	2.64	4.8	US-227F-J20R-F

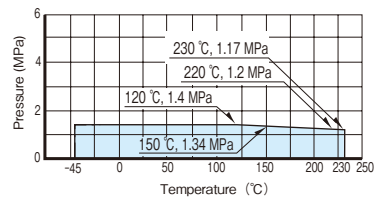
JIS 30K Dimension Table

UNIT(mm)

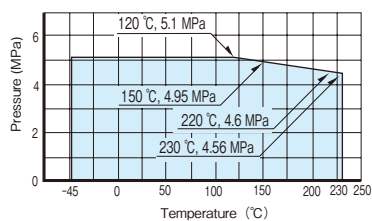
Nominal Dia.	Bore D1	Face-to-face Dimension L	Flange							Orifice Dia. D	Height when fully opened H	Lift L1	Handle Dia. D3	Max. Cv Value	Mass (approx.) (kg)	Ordering Numbers	
			D2	T	C	G	H1	N	F								
10	3/8	10	137	110	16	75	52	19	4	1	8	85	7.5	68	1.08	2.9	US-227D-J30R-C
15	1/2	15	141	115	18	80	55	19	4	1	8	85	7.5	68	1.08	3.3	US-227D-J30R-D
20	3/4	20	151	120	18	85	60	19	4	1	10	107	10	78	1.83	4	US-227E-J30R-E
25	1	25	166	130	20	95	70	19	4	1	12	130	12	88	2.64	5.7	US-227F-J30R-F

Temperature - Pressure Curve

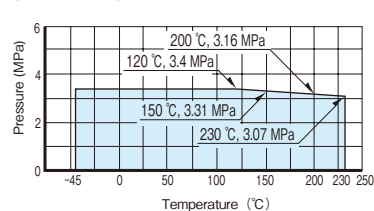
(JIS 10K)



(JIS 30K)



(JIS 20K)

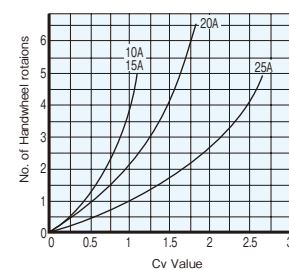


Materials

Parts	Materials
Body *	SUSF316
Stem *	SUS316
Gland Packing *	Stellited (Nominal Dia. 3/4 and 1) C-PTFE + PTFE
Handle	ADC12

Standard color of the Handwheel is metallic blue.
*: Wetted parts

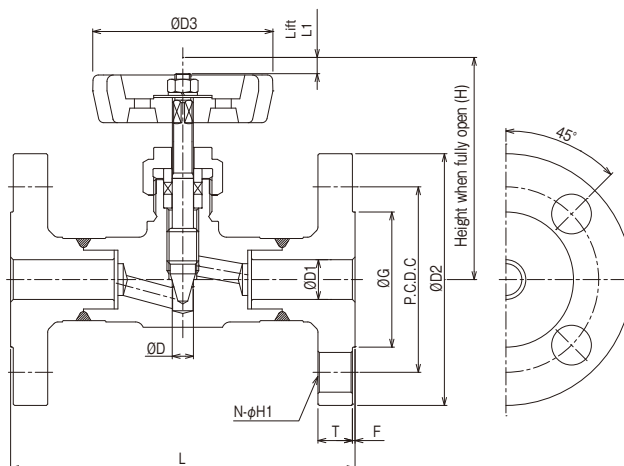
Cv Curves



Note: Materials and dimensions are subject to change without notice.

Stainless Steel JIS RF Flanged Needle Stop Valve

Raised Face Type



● JIS 40K Dimension Table

UNIT(mm)

Nominal Dia.	Bore	Face-to-face	Flange								Orifice Dia.	Height when	Lift	Handle Dia.	Max. Cv	Mass	Ordering Numbers
A	B	D1	D2	T	C	G	H1	N	F	D	fully opened	L1	D3	Value	(approx.)		
10	3/8	10	141	110	18	75	52	19	4	1	8	86	7.5	68	1.08	3.2	US-227D-J40R-C
15	1/2	15	145	115	20	80	55	19	4	1	8	86	7.5	68	1.08	3.6	US-227D-J40R-D
20	3/4	20	155	120	20	85	60	19	4	1	10	107	10	78	1.83	4.3	US-227E-J40R-E
25	1	25	170	130	22	95	70	19	4	1	12	130	12	88	2.64	6.1	US-227F-J40R-F

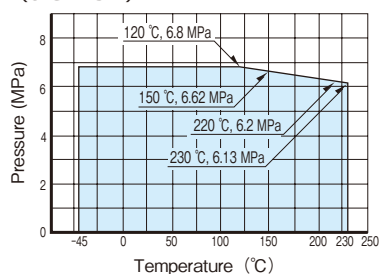
● JIS 63K Dimension Table

UNIT(mm)

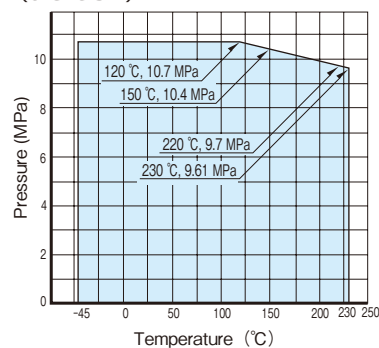
Nominal Dia.	Bore	Face-to-face	Flange								Orifice Dia.	Height when	Lift	Handle Dia.	Max. Cv	Mass	Ordering Numbers
A	B	D1	D2	T	C	G	H1	N	F	D	fully opened	L1	D3	Value	(approx.)		
10	3/8	10	149	115	23	80	52	19	4	1	8	86	7.5	68	1.08	4.1	US-227D-J63R-C
15	1/2	15	149	120	23	85	55	19	4	1	8	86	7.5	68	1.08	4.3	US-227D-J63R-D
20	3/4	20	167	135	25	95	60	23	4	1	10	107	10	78	1.83	6	US-227E-J63R-E
25	1	25	189	140	27	100	70	23	4	1	12	130	12	88	2.64	7.7	US-227F-J63R-F

● Temperature - Pressure Curve

(JIS 40K)



(JIS 63K)



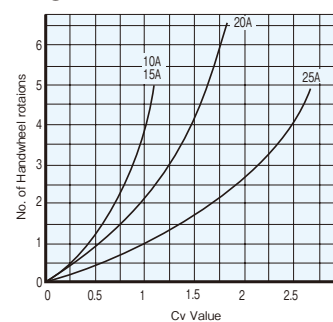
● Materials

Parts	Materials
Body	* SUS316
Stem	* SUS316 Stellited (Nominal Dia. 3/4 and 1)
Gland Packing	* C-PTFE + PTFE
Handle	ADC12

Standard color of the Handwheel is metallic blue.

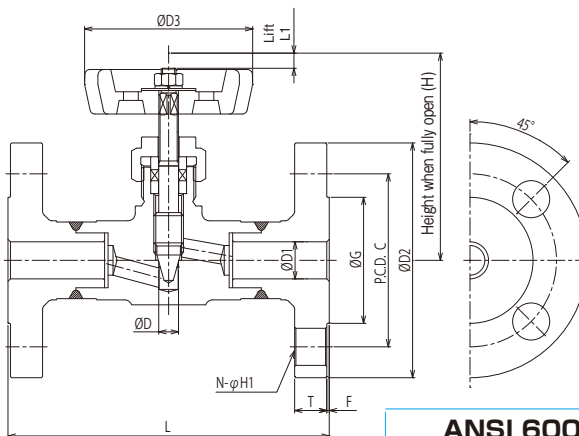
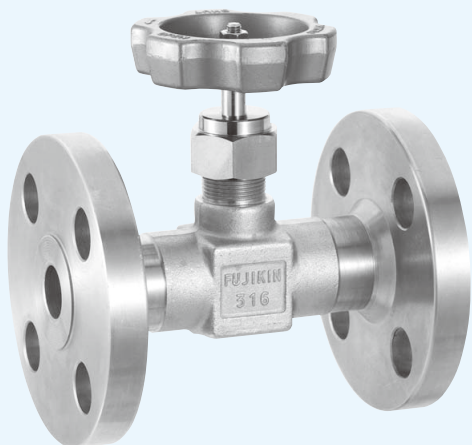
*: Wetted parts

● Cv Curves

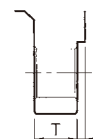


Stainless Steel ANSI RF Flanged Needle Stop Valve

Raised Face Type



ANSI 600 only



ANSI 150 Dimension Table

UNIT(mm)

Nominal Dia.	Bore	Face-to-face Dimension	Flange								Orifice Dia.	Height when fully opened H	Lift L1	Handle Dia. D3	Max. Cv Value	Mass (approx.) (kg)	Ordering Numbers
			D2	T	C	G	H1	N	F								
15	1/2	15	125	88.9	11.2	60.5	35.1	16	4	1.6	8	86	7.5	68	1.08	2.2	US-227D-A2R-D
20	3/4	20	139	98.6	12.7	69.9	43	16	4	1.6	10	107	10	78	1.83	3	US-227E-A2R-E
25	1	25	157	108	14.3	79.3	50.8	16	4	1.6	12	130	12	88	2.64	4.9	US-227F-A2R-F

ANSI 300 Dimension Table

UNIT(mm)

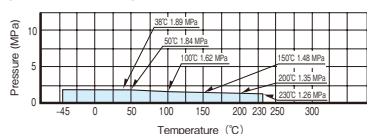
Nominal Dia.	Bore	Face-to-face Dimension	Flange								Orifice Dia.	Height when fully opened H	Lift L1	Handle Dia. D3	Max. Cv Value	Mass (approx.) (kg)	Ordering Numbers
			D2	T	C	G	H1	N	F								
15	1/2	15	131	95.3	14.3	66.6	35.1	16	4	1.6	8	86	7.5	68	1.08	2.2	US-227D-A3R-D
20	3/4	20	147	117.4	15.8	82.6	43	19.5	4	1.6	10	107	10	78	1.83	3	US-227E-A3R-E
25	1	25	163	124	17.6	88.9	50.8	19.5	4	1.6	12	130	12	88	2.64	4.9	US-227F-A3R-F

ANSI 600 Dimension Table

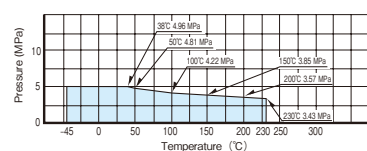
UNIT(mm)

Nominal Dia.	Bore	Face-to-face Dimension	Flange								Orifice Dia.	Height when fully opened H	Lift L1	Handle Dia. D3	Max. Cv Value	Mass (approx.) (kg)	Ordering Numbers
			D2	T	C	G	H1	N	F								
15	1/2	15	147	95.3	14.3	66.6	35.1	16	4	6.35	8	86	7.5	68	1.08	2.3	US-227D-A6R-D
20	3/4	20	160	117.4	15.8	82.6	43	19.5	4	6.35	10	107	10	78	1.83	2.7	US-227E-A6R-E
25	1	25	174	124	17.6	88.9	50.8	19.5	4	6.35	12	130	12	88	2.64	5.2	US-227F-A6R-F

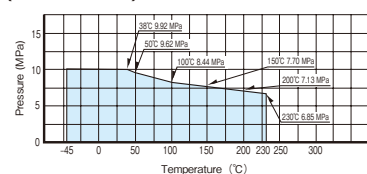
Temperature - Pressure Curve (ANSI 150)



(ANSI 300)



(ANSI 600)

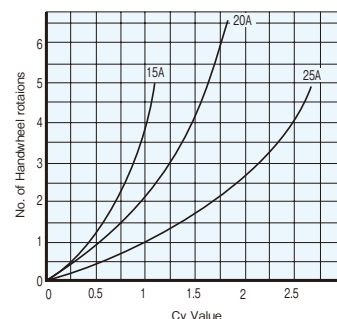


Materials

Parts	Materials
Body	* SUS316
Stem	* SUS316 Stellited (Nominal Dia. 3/4 and 1)
Gland Packing	* C-PTFE + PTFE
Handle	ADC12

Standard color of the Handwheel is metallic blue.
*: Wetted parts

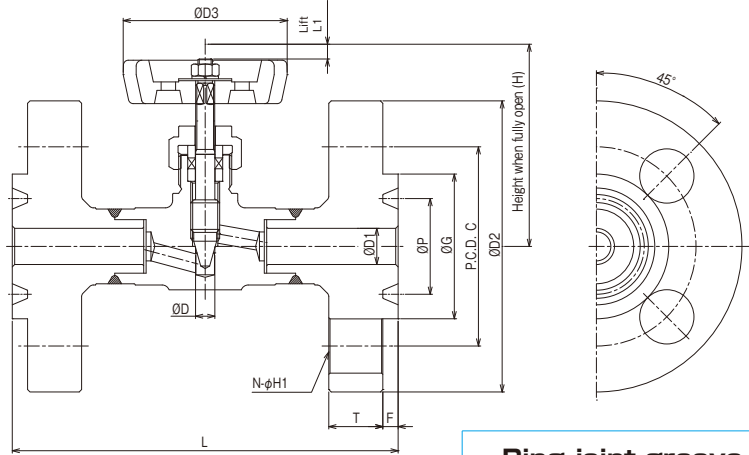
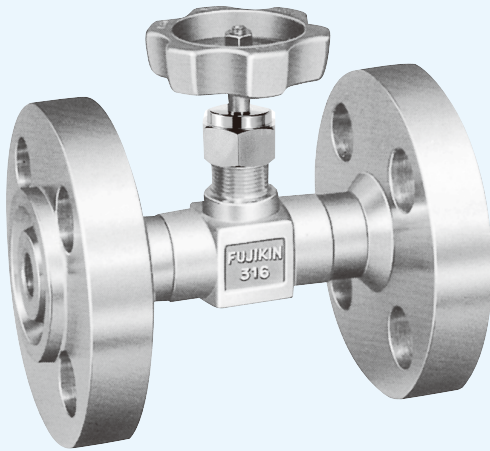
Cv Curves



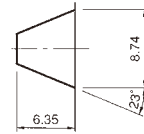
Note: Materials and dimensions are subject to change without notice.

Stainless Steel ANSI RJ Flanged Needle Stop Valve

Ring Joint Type



Ring joint groove



ANSI 900 Dimension Table

UNIT(mm)

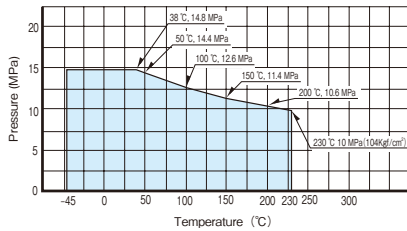
Nominal Dia.	Bore D1	Face-to-face Dimension L	Flange									Orifice Dia. D	Height when fully opened H	Lift L1	Handle Dia. D3	Max. Cv Value	Mass (approx.) (kg)	Ordering Numbers
			D2	T	C	P	G	H1	N	F								
15	1/2	15	160	120.7	22.4	82.6	39.68	60.5	22.5	4	6.35	8	86	7.5	68	1.08	2.2	US-227D-A9J-D
20	3/4	20	180	130.1	25.4	88.9	44.45	66.6	22.5	4	6.35	10	107	10	78	1.83	3	US-227E-A9J-E
25	1	25	205	149.1	28.5	101.6	50.8	71.4	22.5	4	6.35	12	130	12	88	2.64	4.9	US-227F-A9J-F

ANSI 1500 Dimension Table

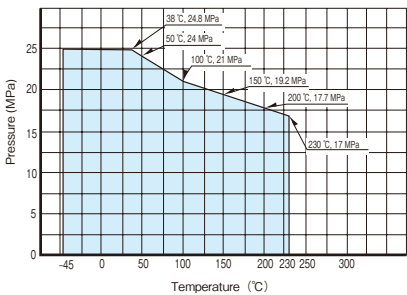
UNIT(mm)

Nominal Dia.	Bore D1	Face-to-face Dimension L	Flange									Orifice Dia. D	Height when fully opened H	Lift L1	Handle Dia. D3	Max. Cv Value	Mass (approx.) (kg)	Ordering Numbers
			D2	T	C	P	G	H1	N	F								
15	1/2	15	160	120.7	22.4	82.6	39.68	60.5	22.5	4	6.35	8	86	7.5	68	1.08	2.2	US-227D-A15J-D
20	3/4	20	180	130.1	25.4	88.9	44.45	66.6	22.5	4	6.35	10	107	10	78	1.83	3	US-227E-A15J-E
25	1	25	205	149.1	28.5	101.6	50.8	71.4	22.5	4	6.35	12	130	12	88	2.64	4.9	US-227F-A15J-F

Temperature - Pressure Curve (ANSI 900)



(ANSI 1500)



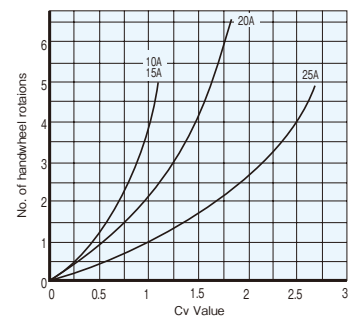
Materials

Parts	Materials
Body	* SUSF316
Stem	* SUS316 Stellited (Nominal Dia. 3/4 and 1)
Gland Packing	* C-PTFE + PTFE
Handle	ADC12

Standard color of the Handwheel is metallic blue.

*: Wetted parts

Cv Curves



US-VALVES (1 1/4 B, 1 1/2 B, 2 B)

Features

- ① Designed to enhance safety, and manufactured under rigorous quality control standards.
- ② Robust forged body and compact bonnet-less construction.
- ③ Needle design enhances ease of flow adjustment.
- ④ Packing and gland design reduce handle torque and enhance seal performance.
- ⑤ If you require valves with Travel Indicators or Lock Nuts, please ask us about our other valve lines.
- ⑥ See the previous pages for angle pattern or flanged valves.

Specifications

- ① Applicable fluid: Water, Air, Nitrogen gas, Inert gas like Helium, and non-corrosive gas and liquid.
- ② Notify Fujikin in advance if you are planning to use this product with toxic gases or at vacuum conditions.
- ③ Low temperature versions of this valve are available (part number ends in -C). A different kind of lubricant must be used if the operating temperature is < -45 °C.
- ④ High temperature versions of this valves are available (part number ends in -CF). A different kind of gland packing and lubricant must be used if the operating temperature is between 150 °C and 230 °C.

Applications

High-pressure gas lines in areas such as industrial machinery, steel mills, petroleum refineries, chemical plants, power plants, and shipyards.

Refer to P.19 for details, such as form and specifications.

Precautions

- ① Notify Fujikin in advance if you are planning to use this product with toxic gases or at vacuum conditions.
- ② Please note the following welding precautions:
 - (1) When welding the valve to pipes, use a chiller or cover the valve with a wet towel to protect it from the heat. Wait at least 20 minutes (for the valve to cool to room temperature) after finishing one side. Then, weld the other side in order to reduce the effects of the heat on the valve.
 - (2) The Gland Nut may loosen during welding because of the heat. When the valve returns to room temperature after welding, retighten the Gland Nut. Always use the recommended tightening torque (see the table on P.1).
- ③ The Gland Packing in these valves was adjusted prior to shipment. To prevent water from permeating the Packing, ensure that the Gland Nut is tight before performing pressure tests on this valve. Please see the Panel Mounting Procedures for more information on the tightening torque required.

Tightening Torque

Size (B)	Torque (N · m)
1 1/4	3
1 1/2	3.5
2	4

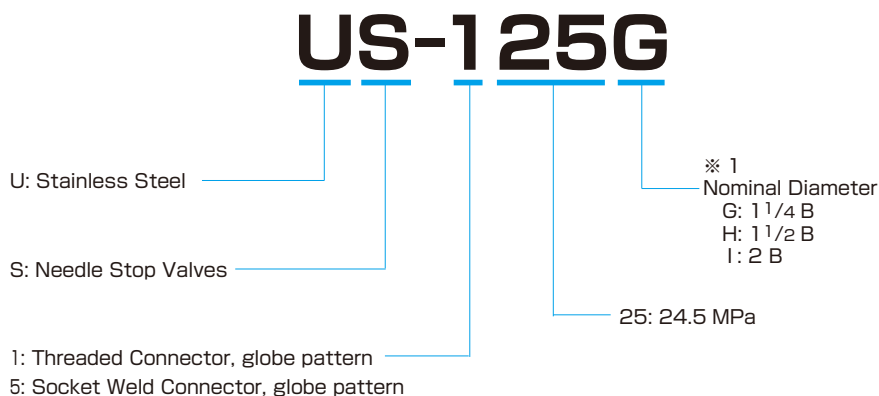
Attention



Valves are available for completely oil-free lines, toxic gas lines, or vacuum conditions. Contact Fujikin for more information.

Ordering Number Designation

Please use the ordering number designations below when placing an order or making an inquiry.



※ 1: Thread Size

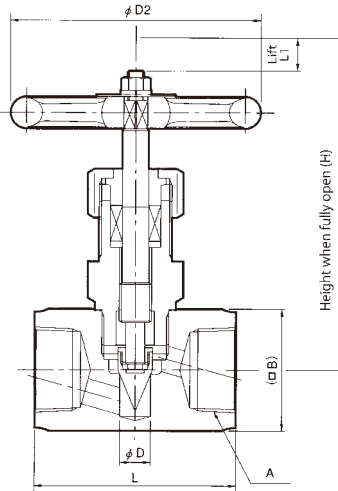
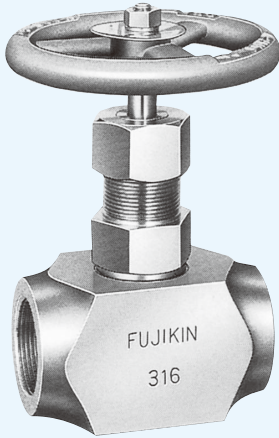
Taper pipe thread	Designation		G	H	I
	JIS B 0203 (1982) (ISO7/1)	Male thread	R 1 1/4	R 1 1/2	R 2
	Female thread	Rc 1 1/4	Rc 1 1/2	Rc 2	

Thread designation complies with JIS B0203 (1982)(ISO7/1).
Sizes as per JIS B0203 (1981) are shown for reference purpose.

Stainless Steel 24.5 MPa Needle Stop Valve (1 1/4 B, 1 1/2 B, 2B)

Rc CONNECTIONS TYPE

● US-125 Type

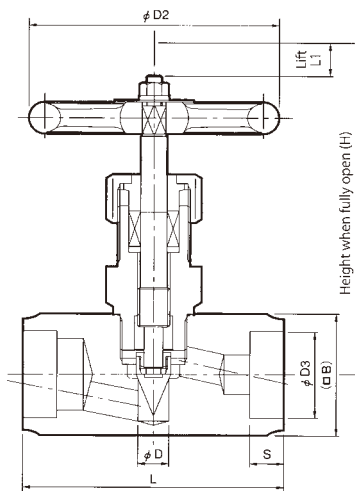
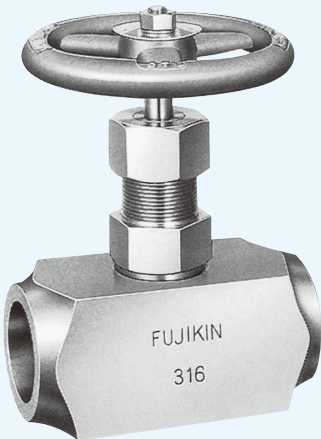


● Dimensions (in mm unless otherwise specified)

Nominal Dia. (B)	Orifice Dia. D	Face-to-face Dimension L	Connecting Thread A	Height when fully open H	Lift L1	Handle Dia. D2	B	Max. Cv Value	Mass (approx.) (Kg)	Ordering Numbers
1 1/4	15	100	Rc1 1/4	157	16	125	60	3.9	3.2	US-125G
1 1/2	20	120	Rc1 1/2	180.5	17	140	70	7.1	4.8	US-125H
2	25	150	Rc2	203.5	18	160	85	10.5	8.2	US-125I

SOCKET WELD TYPE

● US-525 Type



Welding Precautions:

- (1) When welding the valve to pipes, use a chiller or cover the valve with a wet towel to protect it from the heat. Wait at least 20 minutes (for the valve to cool to room temperature) after finishing one side. Then, weld the other side in order to reduce the effects of the heat on the valve.
- (2) The Gland Nut may loosen during welding because of the heat. When the valve returns to room temperature after welding, retighten the Gland Nut. Always use the recommended tightening torque (see the table on P.1).

● Dimensions (in mm unless otherwise specified)

Nominal Dia. (B)	Orifice Dia. D	Face-to-face Dimension L	Connecting Thread D3 S	Height when fully open H	Lift L1	Handle Dia. D2	B	Max. Cv Value	Mass (approx.) (Kg)	Ordering Numbers
1 1/4	15	130	43.2 17	157	16	125	60	4.8	3.9	US-525G
1 1/2	20	150	49.1 20	180.5	17	140	70	7.1	5.9	US-525H
2	25	180	61.1 20	203	18	160	85	10.5	10	US-525I

● Materials

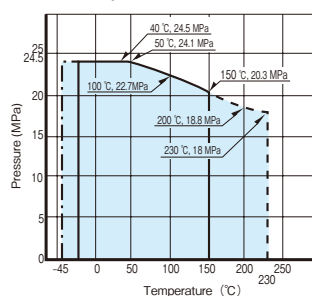
Parts	Materials
Body	* SUSF316
Stem	* SUS316
Disk	* SUS316 (Stellited)
Gland Packing	* PTFE + PFA
Handle	FC200

Standard color of the Handwheel is metallic blue.
SUS316 material may use ASTM material. (SUS316 equivalent material)
*: Wetted parts

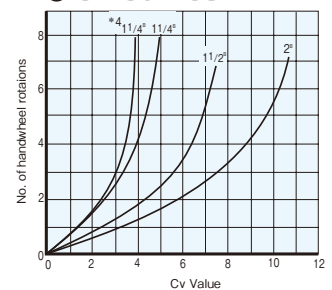
● Specifications

Max. Operating Pressure (MPa)	Fluid Temperature Range (°C)
26.5 * 1	- 20 ~ + 150 * 2, * 3

● Temperature-Pressure Curve



● Cv Curves



- * 1: See the Pressure-Temperature Curve.
- * 2: A different kind of lubricant must be used if the operating temperature is < 20 °C . The dot-dash line (— · —) on the Pressure-Temperature Curve indicates the pressure at these temperatures.
- * 3: A different kind of lubricant and gland packing must be used if the operating temperature is > 150 °C . The dotted line (.....) on the Pressure-Temperature Curve indicates the pressure at these temperatures.
- * 4: This is the Cv curve for threaded 1 1/4B valves (part number: US-125G).

Cautions:

- 1: Applicable fluid: Water, Air, Nitrogen gas, Inert gas like Helium, and non-corrosive gas and liquid.
- 2: Notify Fujikin in advance if you are planning to use this product with toxic gases or at vacuum conditions.

Note: Materials and dimensions are subject to change without notice.

Fujikin®



Fujikin® Carp® Group

URL <http://www.fujikin.co.jp/> E-mail info@fujikin.co.jp



The Year 2005
The 1st Monozukuri (manufacturing)
Nippon Grand Awards
: Excellence Prize